



# South Alburgh Fire District #2 2021

Work is progressing nicely on the Phase II final design. We have contracted with an excellent engineering firm and they continue to make steady & significant progress. A map of the entire system is included below & Phase II is illustrated with the **BLUE LINE**. Phase I (green line) continues to serve their customer base the excellent water provided by the Village's professionally operated plant while steadily adding new customers.

## What's New?

Several engineering studies were completed for Phase II this past year (coagulation, chorine by-products etc) & updates to key documents and design specs were accomplished. It turns out, the line being almost 8 miles long, will require a chorine booster station to be added on Middle Road. This engineering & planning is ongoing & anticipated to be done, on schedule along with a number of other tasks to meet the project schedule for design completion by July 2021. A significant portion of other permitting, planning & legal tasks (right of ways) remain & will require assistance from the SAFD#2 & local citizens before actual construction can begin, perhaps late this year.

Also, the village has approved and is proceeding with the installation of a replacement water tower, providing an additional 100,000 gallon capacity.

### Customers Growing

New customers for Phase I and II water service have been signing up at a brisk pace. NOTE: Customers that have signed up & committed to Phase II prior to start of construction will be charged a one time hookup fee of only \$1500. If you decide to connect after construction phase has begun, this one time fee is increased to \$2500. Customers are responsible for the design & construction of the water line from the "curb stop" to their house. The design & construction of this line on the customer's property must meet all required specifications which are explained on our web page:

<http://safd2.org>

REMINDER: If you are on the Phase II route & have not signed up, please do so ASAP. Instructions on our web page:

<http://safd2.org>

As a reminder, each unit requires a separate shut off & meter. If you have multiple units, such as a garage with an apartment above, you must plan on

multiple hook-ups (we call them ERU's).

### Outlook

Our goal moving forward is to have one affordable rate and serve as many customers as possible. The actual rate for Phase II will be set after we complete the design & receive bids from contractors (hopefully late summer 2021). Phase I currently runs approximately \$270/quarter (rough average).

We have had some preliminary discussions with people interested in adding a Phase III. This is a possibility but will require a higher level of community engagement (hint: volunteers). Please send us an email if you would like to get involved and help. Also, there is a lot of federal tax money being dedicated to infrastructure, including water projects. We would love to engage with new people in the Alburgh area that might have experience with GRANTS & FUNDING. Please contact us if you are able to contribute.

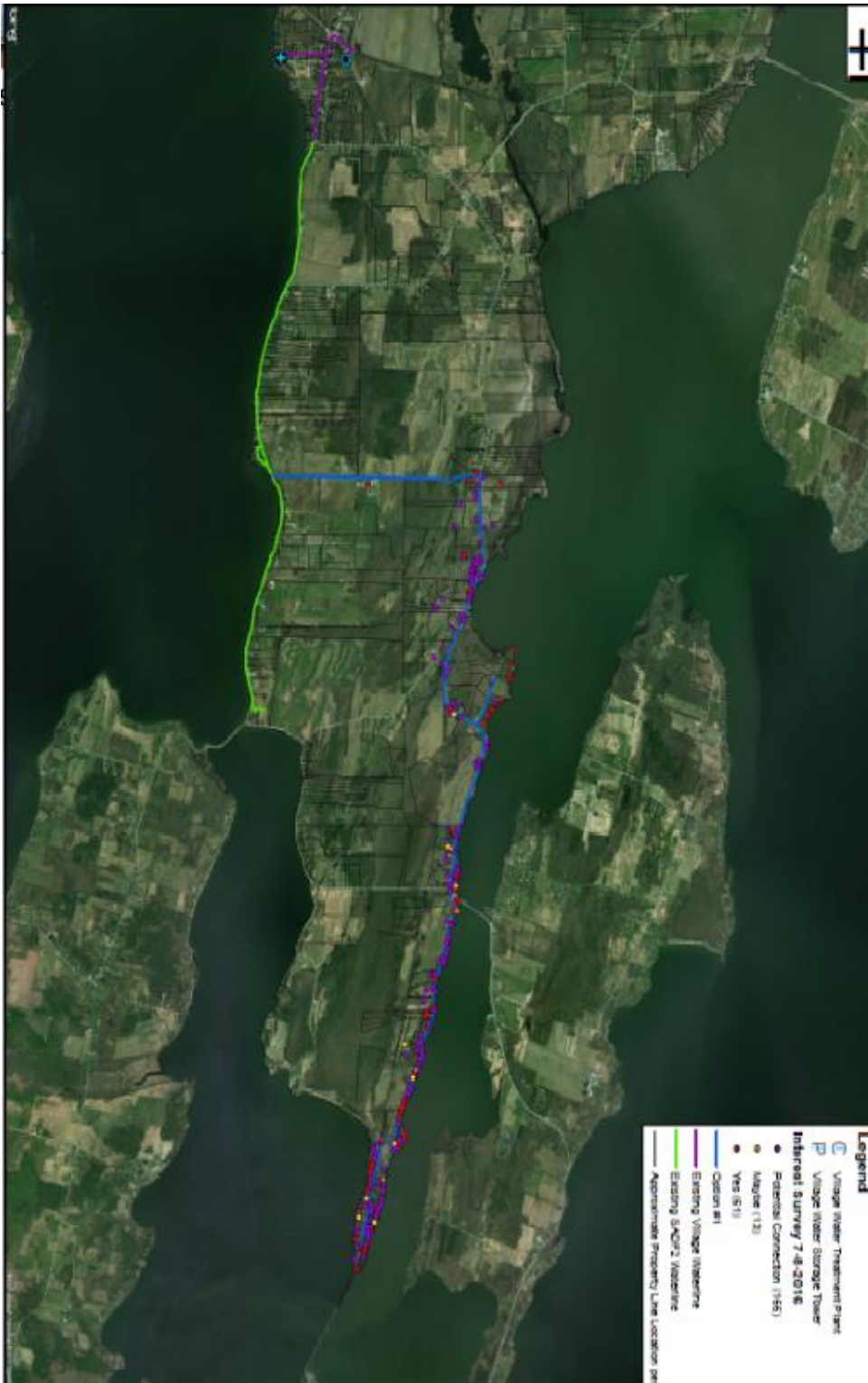
If you have not done so, please provide your email address to:

[safd2committee@gmail.com](mailto:safd2committee@gmail.com)

### The Board!

As volunteers, the three board members and treasurer meet each month to go over concerns, invoices, revenues, and municipal matters. Their positions are elected each year during the annual meeting, with board terms staggered for voting purposes one per year. The current team of Prudential Committee members are Chair John FitzGerald, Tony Speranza, and Alton Brusio. Richard Ernst serves as the district treasurer. Meetings are held in the municipal conference room and are 100% open to the public to attend.

### Phase II - Approved Design: blue line.



This map illustrates the proposed Phase II route in **Blue**. It would travel east along Middle Road, reach US Route 2 South and head south. There would be a spur line to Wagner Point, and reach the area of Poor Farm Road, Cedarvale Estates, and Point of Tongue Road.